

▶ THE STRATEGY TARGETS IMPROVED INCLUSION AND ENGAGEMENT AND EFFECTIVE INTERVENTIONS AND DISABILITY SUPPORTS

ACCESSIBLE AND INCLUSIVE COMMUNITIES WITH OPPORTUNITIES FOR FULL INCLUSION, INCLUDING

- ▶ Transport
- ▶ Built environment and facilities
- ▶ Community services and programs
- ▶ Communication accessible information, services and environments
- ▶ Cultural and religious materials, activities and events



INCREASED AWARENESS AND ACCEPTANCE OF THE RIGHTS OF PEOPLE WITH CP

- ▶ Promote awareness of the value, capabilities and contributions of people with CP
- ▶ Reduce negative attitudes about disability
- ▶ Enhance training of disability professionals and workforce
- ▶ Remove societal barriers preventing equal participation



ENHANCED SOCIAL ENGAGEMENT AND MEANINGFUL RELATIONSHIPS

- ▶ Friends
- ▶ Family
- ▶ Romantic/intimate relationships



INCREASED ACCESS TO EMPLOYMENT OPPORTUNITIES

- ▶ Accessible workplaces that make reasonable accommodations
 - ▶ Awareness of the benefits of employing people with CP
- To
- ▶ Increase personal well-being
 - ▶ Foster financial independence
 - ▶ Enable choice and control over their lives



ENGAGEMENT WITH INDIGENOUS COMMUNITIES TO BETTER ADDRESS THE NEEDS OF INDIGENOUS PEOPLES WITH CP

- ▶ Understand the role of culture and history
- ▶ Identify potential barriers
- ▶ Find the most effective strategies for meeting identified needs



PROVISION OF ACCESSIBLE, WELL-DESIGNED HOUSING

Choice and flexibility

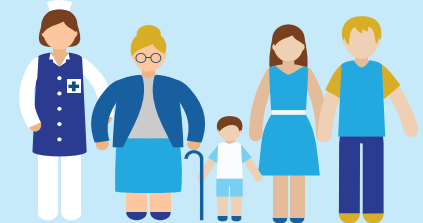
- Where and with whom
- Increased quantity and variety of options
- Options that reflect cultural and community preferences

Independence, inclusion and active engagement in the community

Tailored, adequate supports regardless of location

Ensure all people with CP have **equitable access** to **high quality services and supports** to enable full participation and engagement

ROLE OF FAMILIES AND CARERS ACKNOWLEDGED AND SUPPORTED



MORE INFORMATION

www.cerebralpalsystrategy.com.au

