

RESEARCH

**THE STRATEGY
TARGETS INCREASED
RESEARCH**

4

**GOAL
AREAS**

**Advocate for
increased
research across
all four goal
areas of the
Strategy**

**Active involvement
of people with CP and
their family members/
carers in all aspects
of research**



**Increased Federal,
State, philanthropic
and international
funding for
CP research**

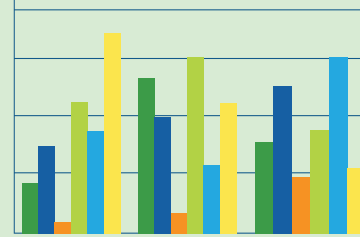


INCREASED ENGAGEMENT WITH INDIGENOUS COMMUNITIES TO



- ▶ Better understand the role of Indigenous culture and belief systems to ensure research is appropriate and respectful
- ▶ Develop relevant tools and interventions that incorporate Indigenous understandings

TOOLS AND DATA



**Develop and establish
reliable tools and
methodologies to evaluate**

- ▶ Quality of life, engagement and participation
- ▶ Interventions and supports
- ▶ Cost effectiveness

**Inclusion of common CP
variables in nationally
collected data and from
service providers**

ENSURE RESEARCH ADVANCES ARE RAPIDLY TRANSLATED INTO CLINICAL PRACTICE

- ▶ Integrated approach to research and service provision
- ▶ Better understanding of the interplay of research and policy/practice
- ▶ Access for practitioners to best available evidence

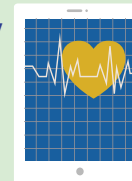


PREVENTION AND CURES

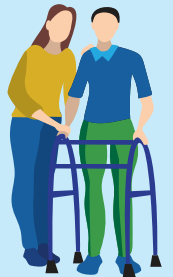
- ▶ Better understanding of causal pathways
- ▶ Implementation of best practice strategies for prevention
- ▶ Advocate for further research examining the causes and potential preventative or curative strategies, including
 - Neuroprotective and neuroregenerative interventions
 - The relationship between genomics and CP

DIAGNOSIS AND INTERVENTION

- ▶ Implement early diagnosis
- ▶ Develop evidence-based strategies for
 - Early intervention
 - Effective interventions and treatments
 - Secondary complications
- ▶ Reduce the gap between diagnosis and intervention



**Remain abreast
of advances
in research
and clinical
practice
in other
conditions**



MORE INFORMATION

www.cerebralpalsystrategy.com.au

